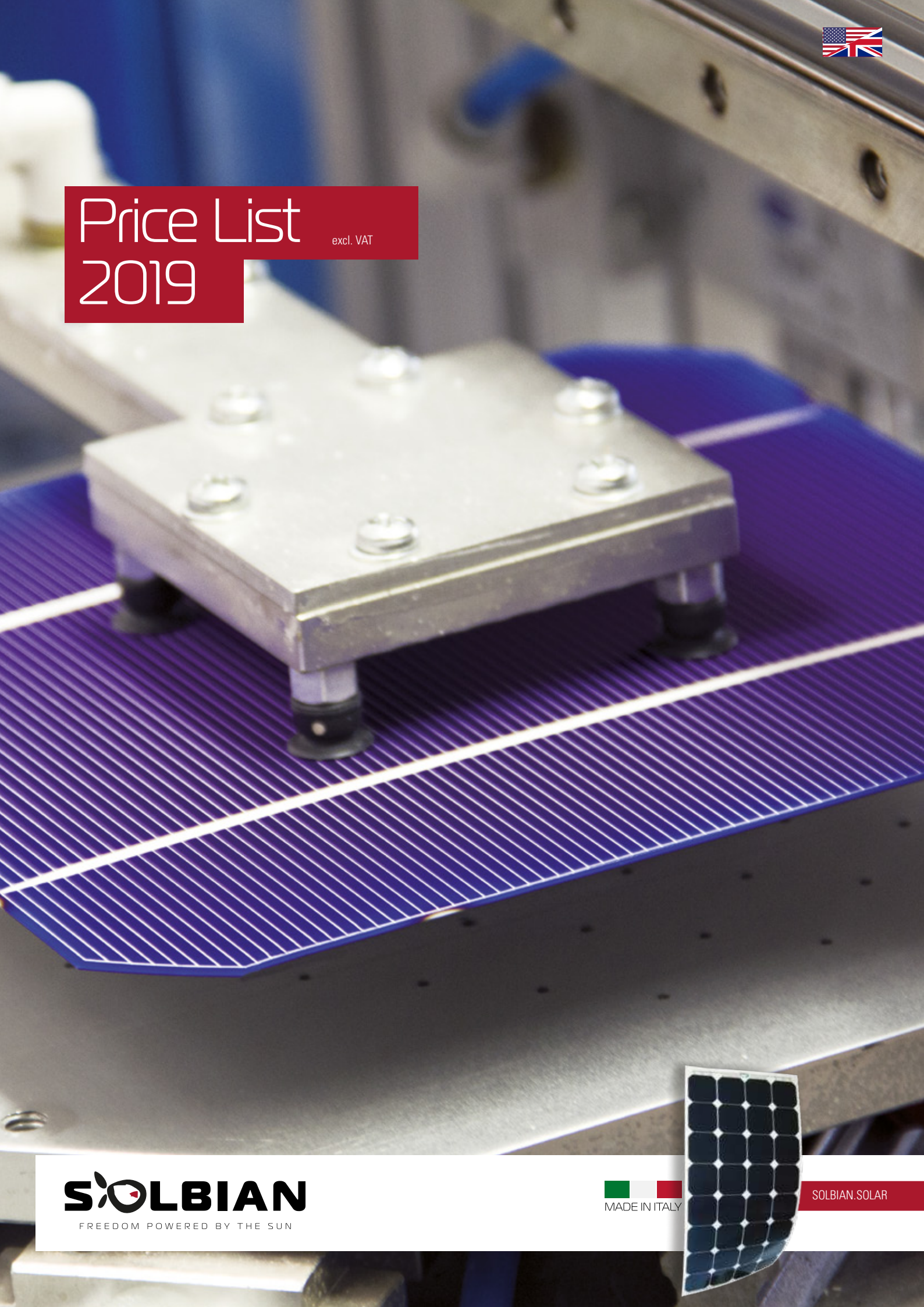




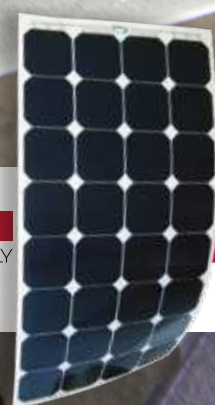
Price List 2019

excl. VAT



SOLBIAN
FREEDOM POWERED BY THE SUN


MADE IN ITALY



SOLBIAN.SOLAR

Power at the highest level.

SP Series



SP series is at the top of the range, thanks to the use of selected SunPower™ monocrystalline silicon cells, reaching a record 24% conversion of sunlight into electricity and with a pleasant appearance thanks to back-contact technology which hides the electrical contacts. SunPower™ cells represent the most advanced technology on the market, and make the SP Solbian panels the most efficient flexible panels.

	Length (mm)	Width (mm)	Thickness (mm)	Weight (kg)	Peak Power (W)	Rated Voltage (V)	Rated Current (A)	N. of Cells	Price €/Wp (excl. VAT)	Price € (excl. VAT)
SP 144	1490	546	2	1.9	144	25.3	5.7	44	8.25	1188.00
SP 130	1363	546	2	1.7	130	22.8	5.7	40	8.25	1072.50
SP 118 L	1236	546	2	1.6	118	20.7	5.7	36	8.25	973.50
SP 118 Q	855	800	2	1.6	118	20.7	5.7	36	8.25	973.50
SP 104	1109	546	2	1.4	104	18.2	5.7	32	8.25	858.00
SP 78	855	546	2	1.1	78	13.7	5.7	24	8.25	643.50
SP 52 L	1109	292	2	0.8	52	9.1	5.7	16	8.25	429.00
SP 52 Q	601	546	2	0.8	52	9.1	5.7	16	8.25	429.00

Super Rugged.

SR Series



The monocrystalline high efficiency SR cells are sandwiched between two patented metallic grids. The front grid is carefully tailored to optimize the current harvesting, while the one behind the cell offers strong mechanical support. The grids essentially form a double shield that acts as a conducting reinforcement to the solar cell. Extreme crack and bend tolerance are built in, enabling novel crystalline silicon architectures. A guaranty of high efficiency and unmatched durability in flexible solar panels.

	Length (mm)	Width (mm)	Thickness (mm)	Weight (kg)	Peak Power (W)	Rated Voltage (V)	Rated Current (A)	N. of Cells	Price €/Wp (excl. VAT)	Price € (excl. VAT)
SR 216	1364	996	2	3	216	25.1	8.6	48	6.21	1341.36
SR 160 L	1523	683	2	2.4	160	18.6	8.6	36	6.21	993.60
SR 160 Q	1046	996	2	2.4	160	18.6	8.6	36	6.21	993.60
SR 144	1364	683	2	2.1	144	16.7	8.6	32	6.21	894.24
SR 108	1046	683	2	1.7	108	12.6	8.6	24	6.21	670.68
SR 72 L	1364	365	2	1.2	72	8.4	8.6	16	6.21	447.12
SR 72 Q	728	683	2	1.2	72	8.4	8.6	16	6.21	447.12
SR 62	1205	365	2	1.1	62	7.2	8.6	14	6.21	385.02

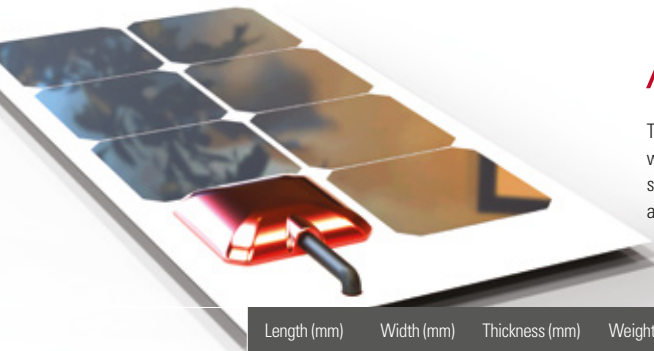
Aesthetics, reliability and price.

SX Series



In the SX series monocrystalline solar cells are electrically connected using ultra-thin copper wires that form a very fine mesh on the cell surface, resulting in thousands of contact points. This alternative to the standard bus-bar method allows a higher module power and increases the energy yield. A technology optimally suited for flexible modules due to its intrinsic insensitivity to micro-cracks, the most common cause of energy loss in solar modules. Another advantage is a reduced sensitivity to shading, pushed to the extreme in the Guardian (G) models where additional bypass diodes are inserted thanks to an innovative cell layout. This new connection technology, together with the use of high efficiency silicon cells, makes SX panels especially powerful and reliable.

	Length (mm)	Width (mm)	Thickness (mm)	Weight (kg)	Peak Power (W)	Rated Voltage (V)	Rated Current (A)	N. of Cells	Price €/Wp (excl. VAT)	Price € (excl. VAT)
SX 216	1364	996	2	3	216	25.1	8.6	48	4.67	1008.72
SX 160 L	1523	683	2	2.4	160	18.6	8.6	36	4.67	747.20
SX 160 Q	1046	996	2	2.4	160	18.6	8.6	36	4.67	747.20
SX 160 G	1046	996	2	2.4	160	18.6	8.6	36	6.21	993.60
SX 144	1364	683	2	2.1	144	16.7	8.6	32	4.67	672.48
SX 108	1046	683	2	1.7	108	12.6	8.6	24	4.67	504.36
SX 108 G	726	996	2	1.7	108	12.6	8.6	24	6.21	670.68
SX 72 L	1364	365	2	1.2	72	8.4	8.6	16	4.67	366.24
SX 72 Q	728	683	2	1.2	72	8.4	8.6	16	4.67	366.24
SX 62	1205	365	2	1.1	62	7.2	8.6	14	4.67	289.54



ALLinONE Series

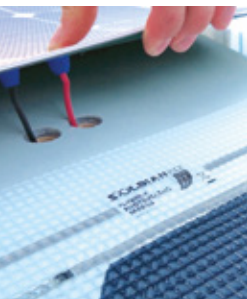


The ALLinONE series: solar panel + charge controller. To make solar energy simpler, suitable for the enthusiast as well as the professional user. All the electronics you need are already packed into the rugged waterproof box: a sophisticated MPPT controller capable of boosting the voltage to match with your battery pack. Available for lead and lithium batteries.

	Length (mm)	Width (mm)	Thickness (mm)	Weight (kg)	Peak Power (W)	Battery Voltage (V)	Maximum Current (A)	N. of Cells	Price € (excl. VAT)
SP 60 AiO	728	546	15	1.1	60	12/24	5/2.5	19	558.00
SP 47 L AiO	1109	292	15	0.9	47	12/24	4/2	15	413.35
SP 47 Q AiO	601	546	15	0.9	47	12/24	4/2	15	413.35
SP 23 AiO	600	292	15	0.6	23	12/24	2/1	7	206.67

	Length (mm)	Width (mm)	Thickness (mm)	Weight (kg)	Peak Power (W)	Battery Voltage (V)	Maximum Current (A)	N. of Cells	Price € (excl. VAT)
SR 104 AiO	1046	683	15	1.7	104	12/24	8.6/4.3	23	671.67
SR 68 L AiO	1364	365	15	1.3	68	12/24	5.6/2.8	15	454.67
SR 68 Q AiO	728	683	15	1.3	68	12/24	5.6/2.8	15	454.67

	Length (mm)	Width (mm)	Thickness (mm)	Weight (kg)	Peak Power (W)	Battery Voltage (V)	Maximum Current (A)	N. of Cells	Price € (excl. VAT)
SX 104 AiO	1046	683	15	1.7	104	12/24	8.6/4.3	23	454.65
SX 68 L AiO	1364	365	15	1.3	68	12/24	5.6/2.8	15	320.35
SX 68 Q AiO	728	683	15	1.3	68	12/24	5.6/2.8	15	320.35

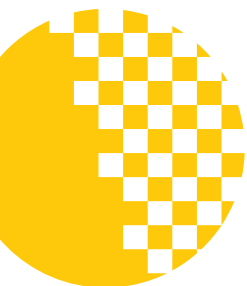


Embed solar in your structure

Surface Mounting (SM) Option

Solbianfex panels will become part of your boat deck, caravan roof or golf cart hard-top. The SM option consists of a textured surface and of a safe and durable electrical connection via moisture-resistant cables. A custom-made grommet offers a perfect sealing of the electrical contacts and avoids chafing of the cables. SM panels are available with ready-to-use structural adhesive.

SM option is free of charge for the SP and SR series. A price increase of 20% will be calculated if requested on SX series.



Where quality meets beauty

Invisible Solar Power (ISP) option

The SP series is now available with a completely new look. Thanks to different masking technologies a rich portfolio of graphics will change your idea of solar panels. Solid colors, materials, geometric patterns; the ISP option broadens the meaning of customization in the solar field.

ISP option is available only for the SP series panels. The price increase depends on the graphics choice, within a 25% to 100% range.



The perfect solar panel for your project

Custom systems

The SOLBIAN Solar / Sailectron engineering team plans your personal solar system, perfectly integrated to match space, shape, shadow and all other technical challenges of your project. Simply send CAD data or a detailed sketch together with photos to custom@solbian.solar

Planning and customization are offered as a free service.

MPPT Controllers

	Type	Bluetooth	MAX Panel Power	Min Panel Voltage	MAX Panel Voltage	MAX Current	Battery Type*	Battery Voltage	Price € (excl. VAT)
WESTERN WMARINE10	U/D	N	120 W (12 V) / 220 W (24 V)	5 V (12 V) / 10 V (24 V)	40 V	10 A	Pb/Li	12 / 24	181.67
WESTERN WRM20	D	N	310 W (12 V) / 620 W (24 V)	18 V (12 V) / 32 V (24 V)	100 V	20 A	Pb/Li	12 / 24	160.00
WESTERN WRM30 (DOUBLE MPPT)	D	N	450 W (12 V) / 900 W (24 V) / 1800 W (48 V)	18 V (12 V) / 32 V (24 V) / 62 V (48 V)	150 V	30 A	Pb/Li	12 / 24 / 48	397.95
WESTERN WRM15 DUALB (2 BATT.)	D	Y	250 W (12 V) / 500 W (24 V)	18 V (12 V) / 32 V (24 V)	100 V	15 A	Pb/Li	12 / 24	277.10
GENASUN GV-10/12	D	N	140 W	18 V	34 V	10.5 A	Pb	12.5 / 14.2 / 16.7	109.20
GENASUN GV-10/12-14-16	D	N	120 W / 140 W / 160 W	16 V / 18 V / 20 V	34 V	10.5 A	Li	12.5 / 14.2 / 16.7	147.10
GENASUN GV-BOOST 8/12 ***	U	N	105 W	5 V	60 V	8 A	Pb	12	134.20
GENASUN GV-BOOST 8/14	U	N	105 W	5 V	60 V	8 A	Li	14.2	162.95
GENASUN GV-BOOST 8/24	U	N	210 W	5 V	60 V	8 A	Pb	24	174.20
GENASUN GV-BOOST 8/28	U	N	210 W	5 V	60 V	8 A	Li	28.4	207.10
GENASUN GV-BOOST 8/48	U	N	350 W	5 V	60 V	8 A	Pb	48	174.20
GENASUN GV-BOOST 8/56	U	N	350 W	5 V	60 V	8 A	Li	56.8	207.10
VICTRON BLUESOLAR 75/15	D	Y**	200 W (12 V) / 400 W (24 V)	18 V (12 V) / 32 V (24 V)	75 V	15 A	Pb/Li	12 / 24	98.35
VICTRON BLUESOLAR 100/30	D	Y**	440 W (12 V) 880 W (24 V)	18 V (12 V) / 32 V (24 V)	100 V	30 A	Pb/Li	12 / 24	220.00
VICTRON BLUESOLAR 150/35	D	Y**	500 W (12 V) / 1000 W (24 V) / 2000 W (48 V)	18 V (12 V) / 32 V (24 V) / 62 V (48 V)	150 V	35 A	Pb/Li	12 / 24 / 48	330.00
VICTRON BLUESOLAR 100/50	D	Y**	700 W (12 V) / 1400 W (24 V)	18 V (12 V) / 32 V (24 V)	100 V	50 A	Pb/Li	12 / 24	330.00
VICTRON SMARTSOLAR 75/15	D	Y	200 W (12 V) / 400 W (24 V)	18 V (12 V) / 32 V (24 V)	75 V	15 A	Pb/Li	12 / 24	132.10
VICTRON SMARTSOLAR 100/30	D	Y	440 W (12 V) 880 W (24 V)	18 V (12 V) / 32 V (24 V)	100 V	30 A	Pb/Li	12 / 24	253.35
VICTRON SMARTSOLAR 150/35	D	Y	500 W (12 V) / 1000 W (24 V) / 2000 W (48 V)	18 V (12 V) / 32 V (24 V) / 62 V (48 V)	150 V	35 A	Pb/Li	12 / 24 / 48	363.35
VICTRON SMARTSOLAR 100/50	D	Y	700 W (12 V) / 1400 W (24 V)	18 V (12 V) / 32 V (24 V)	100 V	50 A	Pb/Li	12 / 24	363.35
VICTRON VE.DIRECT BLUETOOTH DONGLE	Tool allowing Victron BlueSolar to communicate with a smartphone								55.00

* Lithium batteries must have the integrated Battery Management System (BMS)

Legend: U= Step up; D= Step down; U/D= Mixed

** With optional bluetooth accessory

*** The Genasun GV-BOOST controllers are available in waterproof version: add € 40

Accessories

	Description	Price € (excl. VAT)
Adhesive	Double-sided adhesive tape for a permanent bonding	30.85
Steel eyelets	Eyelets realized on the edges of the panel	20.85
LOXX fastener	Strap buttons that allow easy installation and removal of the panel (each)	8.15
Zipper	Zipper sewn on the edge of the panel	93.35
Stiffening	Mechanical stiffening via fiberglass bars	47.00
Connectors	Waterproof MC4 connectors for the electrical connection to the junction box (a pair)	8.15
Y connectors	To connect two panels in parallel (each)	10.45
Diode connector	Blocking diode for parallel connection (each)	8.15
Deck seal	Two deck-integrated MC4 connectors, allows a removable installation with safe and elegant cable connection	47.00
Cables	4mm ² marine-grade solar cables (€/m)	2.00
Circuit breaker	To protect your circuit. Available in different sizes (20/40/50 A)	20.75

LIST_EN_2019