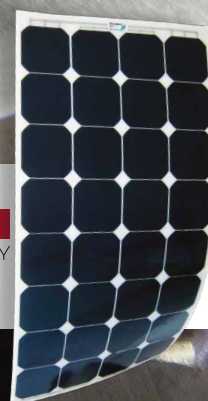


# Price List

excl. VAT

# 2022



Power at the highest level.

## SP Series



The SP Series is our top-of-the-range product, thanks to the use of selected SunPower™ back-contact monocrystalline silicon cells, reaching a record 24% conversion of sunlight into electricity. Their electrical contacts hidden on the back of the cell guarantee a pleasant aesthetical appearance, the 5" cell size makes them highly suitable for complicated custom shapes. The use of the most advanced technology makes Solbianflex SP the highest-efficiency flexible panels currently available.

	Length (mm)	Width (mm)	Thickness (mm)	Weight (kg)	Peak Power (Wp)	Rated Voltage (V)	Rated Current (A)	N° of Cells	Price €/Wp	Price € (excluding VAT)
<b>SP 144</b>	1490	546	2	1.9	144	25.3	5.7	44	8.25	1188.00
<b>SP 130</b>	1363	546	2	1.7	130	22.8	5.7	40	8.25	1072.50
<b>SP 118 L</b>	1236	546	2	1.6	118	20.7	5.7	36	8.25	973.50
<b>SP 118 Q</b>	855	800	2	1.6	118	20.7	5.7	36	8.25	973.50
<b>SP 104</b>	1109	546	2	1.4	104	18.2	5.7	32	8.25	858.00
<b>SP 78</b>	855	546	2	1.1	78	13.7	5.7	24	8.25	643.50
<b>SP 52 L</b>	1109	292	2	0.8	52	9.1	5.7	16	8.25	429.00
<b>SP 52 Q</b>	601	546	2	0.8	52	9.1	5.7	16	8.25	429.00

Super Rugged Series.

## SR Series



The monocrystalline high-efficiency SR cells are sandwiched by two patented metallic grids. While the front grid is carefully tailored to optimize current harvesting, the one behind the cell offers strong mechanical support. The grids essentially form a double shield, acting as a conductive reinforcement of the solar cell. Extreme crack and bend tolerance are built in, enabling novel crystalline silicon architectures. A guaranty of high efficiency and durability unmatched in flexible solar panels.

	Length (mm)	Width (mm)	Thickness (mm)	Weight (kg)	Peak Power (Wp)	Rated Voltage (V)	Rated Current (A)	N° of Cells	Price €/Wp	Price € (excluding VAT)
<b>SR 248</b>	1364	996	2	3	248	27.0	9.2	48	6.21	1 540.88
<b>SR 186 L</b>	1523	683	2	2.4	186	20.2	9.2	36	6.21	1155.06
<b>SR 186 Q</b>	1046	996	2	2.4	186	20.2	9.2	36	6.21	1 155.06
<b>SR 166</b>	1364	683	2	2.1	166	18.0	9.2	32	6.21	1 030.86
<b>SR 108</b>	1046	683	2	1.7	124	13.5	9.2	24	6.21	770.04
<b>SR 82 L</b>	1364	365	2	1.2	82	8.9	9.2	16	6.21	509.22
<b>SR 82 Q</b>	728	683	2	1.2	82	8.9	9.2	16	6.21	509.22
<b>SR 72</b>	1205	365	2	1.1	72	7.8	9.2	14	6.21	447.12

Aesthetics, reliability and price.

## SX Series



The monocrystalline SX cells are electrically connected using ultra-thin copper wires which form a very fine mesh on the cell surface, resulting in thousands of contact points. This alternative to the standard bus-bar method allows a higher module power and increases the energy yield. A technology optimally suited for flexible modules, due to its intrinsic insensitivity to micro-cracks, which are the most common cause of energy loss in solar panels. Another advantage is reduced sensitivity to shading, pushed to the extreme with the Guardian (G) Models where additional bypass diodes can be inserted thanks to an innovative cell layout. layout. This new connection technology together with the use of highly efficient silicon cells make SX panels a great choice in applications without high mechanical load.

	Length (mm)	Width (mm)	Thickness (mm)	Weight (kg)	Peak Power (Wp)	Rated Voltage (V)	Rated Current (A)	N° of Cells	Price €/Wp	Price € (excluding VAT)
<b>SX 236</b>	1364	996	2	3	236	25.9	9.1	48	4.67	1 102.12
<b>SX 176 L</b>	1523	683	2	2.4	176	19.3	9.1	36	4.67	821.92
<b>SX 176 Q</b>	1046	996	2	2.4	176	19.3	9.1	36	4.67	821.92
<b>SX 176 G*</b>	1046	996	2	2.4	176	19.3	9.1	36	6.21	1 092.96
<b>SX 158</b>	1364	683	2	2.1	158	17.4	9.1	32	4.67	737.86
<b>SX 118</b>	1046	683	2	1.7	118	13.0	9.1	24	4.67	551.06
<b>SX 118 G*</b>	726	996	2	1.7	118	13.0	9.1	24	6.21	732.78
<b>SX 78 L</b>	1364	365	2	1.2	78	8.6	9.1	16	4.67	364.26
<b>SX 78 Q</b>	728	683	2	1.2	78	8.6	9.1	16	4.67	364.26
<b>SX 68</b>	1205	365	2	1.1	68	7.5	9.1	14	4.67	317.56

More power with bifacial cells.

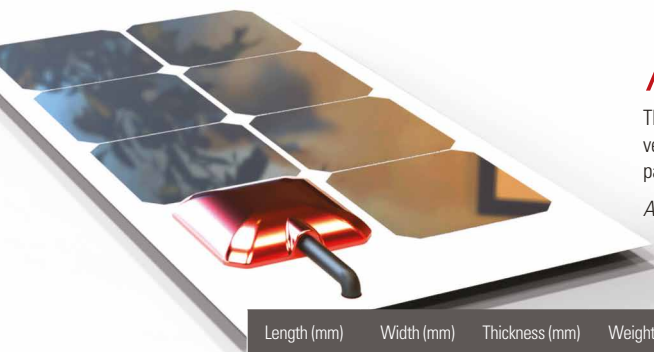
## SXX Series



The SXX Series comes at the same size of SX panels but generates significantly more power, thanks to its silicon-based heterojunction (HJT) solar cells which offer more than 24% efficiency. When compared with conventional panels of the same nominal power, SXX can harvest more energy due to HJT cells being bifacial, an important feature especially when panels are encapsulated in a transparent sandwich and installed with their backside (which can reach an additional 80% of the indicated front power) exposed to indirect light. In addition, HJT cells perform better than others in hot climates, thanks to very low temperature coefficients. SXX should only be used in applications with low mechanical loads.

	Length (mm)	Width (mm)	Thickness (mm)	Weight (kg)	Peak Power (Wp)	Rated Voltage (V)	Rated Current (A)	N° of Cells	Price €/Wp	Price € (excluding VAT)
<b>SXX 258</b>	1364	996	2	3	258	30.0	8.6	48	6.21	1 602.18
<b>SXX 194 L</b>	1523	683	2	2.4	194	22.6	8.6	36	6.21	1 204.74
<b>SXX 194 Q</b>	1046	996	2	2.4	194	22.6	8.6	36	6.21	1 207.74
<b>SXX 194 G*</b>	1046	996	2	2.4	194	22.6	8.6	36	7.25	1 406.50
<b>SXX 172</b>	1364	683	2	2.1	172	20.0	8.6	32	6.21	1 068.12
<b>SXX 130</b>	1046	683	2	1.7	130	15.1	8.6	24	6.21	807.30
<b>SXX 130 G*</b>	726	996	2	1.7	130	15.1	8.6	24	7.25	942.50
<b>SXX 86 L</b>	1364	365	2	1.2	86	10.0	8.6	16	6.21	534.06
<b>SXX 86 Q</b>	728	683	2	1.2	86	10.0	8.6	16	6.21	534.06
<b>SXX 76</b>	1205	365	2	1.1	76	8.8	8.6	14	6.21	471.96





## ALLinONE Solution



The ALLinONE solution: A solar panel with integrated charge controller, making solar energy simple and convenient. A sophisticated step-up MPPT controller capable of boosting the panel voltage into a charging curve is packed into a waterproof box, resulting in a solar panel which can be connected directly to the battery.

Available for lead-acid, gel, AGM and lithium-ion batteries.

	Length (mm)	Width (mm)	Thickness (mm)	Weight (kg)	Peak Power (Wp)	Battery Voltage (V)	Maximum Current (A)	N. of Cells	Price € (excluding VAT)
<b>SP 60 AiO</b>	728	546	15	1.1	60	12/24	5/2.5	19	558.00
<b>SP 47 L AiO</b>	1109	292	15	0.9	47	12/24	4/2	15	413.35
<b>SP 47 Q AiO</b>	601	546	15	0.9	47	12/24	4/2	15	413.35
<b>SP 23 AiO</b>	600	292	15	0.6	23	12/24	2/1	7	206.67

	Length (mm)	Width (mm)	Thickness (mm)	Weight (kg)	Peak Power (Wp)	Battery Voltage (V)	Maximum Current (A)	N. of Cells	Price € (excluding VAT)
<b>SR 118 AiO</b>	1046	683	15	1.7	118	12/24	9/5	23	682.00
<b>SR 76 L AiO</b>	1364	365	15	1.3	76	12/24	6/3	15	465.00
<b>SR 76 Q AiO</b>	728	683	15	1.3	76	12/24	6/3	15	465.00

	Length (mm)	Width (mm)	Thickness (mm)	Weight (kg)	Peak Power (Wp)	Battery Voltage (V)	Maximum Current (A)	N. of Cells	Price € (excluding VAT)
<b>SX 112 AiO</b>	1046	683	15	1.7	112	12/24	9/5	23	535.27
<b>SX 72 L AiO</b>	1364	365	15	1.3	72	12/24	6/3	15	369.93
<b>SX 72 Q AiO</b>	728	683	15	1.3	72	12/24	6/3	15	369.93

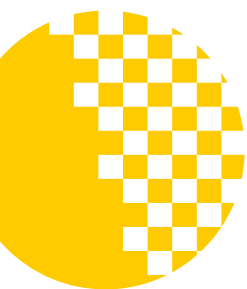


Embed solar in your structure

## Surface Mounting (SM) Option

Solbianflex panels will become part of your boat deck, caravan roof or any other walkable surface. The SM option consists of a textured surface with a safe and durable electrical connection via moisture-resistant cables. A specially developed custom grommet offers perfect sealing of the electrical contacts and avoids chafing and short-circuits at the connection point. SM panels can be supplied with pre-mounted structural adhesive.

SM option is free of charge for the SP and SR series. A price increase of 20% will be calculated if requested on SX series.  
SM option is not available on SXX series.

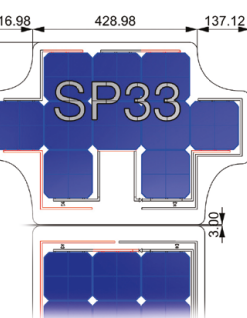


Where quality meets beauty

## Invisible Solar Power (ISP) option

The SP series can be offered with a completely new look. Thanks to different pigmentation technologies a rich portfolio of graphics will change your aesthetic idea of a solar panel. Solid colors, material replicas, geometric patterns – the ISP option broadens the meaning of customization in the solar industry.

ISP option is available only for the SP series panels. This option involves a price increase of approximately 30%.



The perfect solar panel for your project

## Custom systems

The SOLBIAN Solar / Sailectron engineering team plans your personal solar system, carefully designed to match space, shape, shadows and all other technical challenges of your project. Simply send CAD data or a detailed sketch together with photos to [custom@solbian.solar](mailto:custom@solbian.solar)

Planning and customization are offered as a free service.  
Use our 1:1 printed templates to ensure a perfect fit and wire position, even for complicated shapes.

# MPPT Controllers

Ask us about Victron Energy products!

We'll be happy to deliver batteries, inverters, chargers and monitoring solutions for your system.



	Type	Bluetooth	MAX Panel Power	Min Panel Voltage	MAX Panel Voltage	MAX Current	Battery Type*	Battery Voltage	Price € (excluding VAT)
WESTERN <b>WMARINE10</b>	U/D	N	120 W (12 V) / 220 W (24 V)	5 V (12 V) / 10 V (24 V)	40 V	10 A	PB/LI	12 / 24	151.00
WESTERN <b>WRM20</b>	D	N	310 W (12 V) / 620 W (24 V)	18 V (12 V) / 32 V (24 V)	100 V	20 A	PB/LI	12 / 24	153.00
WESTERN <b>WRM20+ (WDR COMPATIBLE)</b>	D	N	310 W (12 V) / 620 W (24 V)	18 V (12 V) / 32 V (24 V)	100 V	20 A	PB/LI	12 / 24	181.00
WESTERN <b>WRM30+ (WDR COMPATIBLE)</b>	D	N	450 W (12 V) / 900 W (24 V) / 1800 W (48 V)	18 V (12 V) / 32 V (24 V) / 62 V (48 V)	150 V	30 A	PB/LI	12 / 24 / 48	376.00
WESTERN <b>WRM15 DUALB-E (2 BATT.)</b>	D	Y	250 W (12 V) / 500 W (24 V)	18 V (12 V) / 32 V (24 V)	100 V	15 A	PB/LI	12 / 24	231.00
WESTERN <b>WRM15 DUALB (2 BATT.)</b>	D	Y	250 W (12 V) / 500 W (24 V)	18 V (12 V) / 32 V (24 V)	100 V	15 A	PB/LI	12 / 24	262.00
WESTERN <b>WDR SYSTEM MONITOR</b>	Remote monitoring - local and cloud interface								309.00
GENASUN <b>GV-10/12</b>	D	N	160 W	18 V	34 V	10,5 A	PB	12	109.00
GENASUN <b>GV-10/12-14-16</b>	D	N	120 W / 140 W / 160 W	16 V / 18 V / 20 V	34 V	10,5 A	LI	12,5 / 14,2 / 16,7	147.00
GENASUN <b>GV-BOOST 8/12 ***</b>	U	N	105 W	5 V	60 V	8 A	PB	12	129.00
GENASUN <b>GV-BOOST 8/14</b>	U	N	105 W	5 V	60 V	8 A	LI	14,2	163.00
GENASUN <b>GV-BOOST 8/24</b>	U	N	210 W	5 V	60 V	8 A	PB	24	174.00
GENASUN <b>GV-BOOST 8/28</b>	U	N	210 W	5 V	60 V	8 A	LI	28,4	207.00
GENASUN <b>GV-BOOST 8/48</b>	U	N	350 W	5 V	60 V	8 A	PB	48	174.00
GENASUN <b>GV-BOOST 8/56</b>	U	N	350 W	5 V	60 V	8 A	LI	56,8	207.00
VICTRON <b>BLUESOLAR 75/15</b>	D	Y**	200 W (12 V) / 400 W (24 V)	18 V (12 V) / 32 V (24 V)	75 V	15 A	PB/LI	12 / 24	103.00
VICTRON <b>BLUESOLAR 100/30</b>	D	Y**	440 W (12 V) 880 W (24 V)	18 V (12 V) / 32 V (24 V)	100 V	30 A	PB/LI	12 / 24	207.00
VICTRON <b>BLUESOLAR 150/35</b>	D	Y**	500 W (12 V) / 1000 W (24 V) / 2000 W (48 V)	18 V (12 V) / 32 V (24 V) / 62 V (48 V)	150 V	35 A	PB/LI	12 / 24 / 48	345.00
VICTRON <b>BLUESOLAR 100/50</b>	D	Y**	700 W (12 V) / 1400 W (24 V)	18 V (12 V) / 32 V (24 V)	100 V	50 A	PB/LI	12 / 24	345.00
VICTRON <b>SMARTSOLAR 75/15</b>	D	Y	200 W (12 V) / 400 W (24 V)	18 V (12 V) / 32 V (24 V)	75 V	15 A	PB/LI	12 / 24	120.00
VICTRON <b>SMARTSOLAR 100/30</b>	D	Y	440 W (12 V) 880 W (24 V)	18 V (12 V) / 32 V (24 V)	100 V	30 A	PB/LI	12 / 24	264.00
VICTRON <b>SMARTSOLAR 150/35</b>	D	Y	500 W (12 V) / 1000 W (24 V) / 2000 W (48 V)	18 V (12 V) / 32 V (24 V) / 62 V (48 V)	150 V	35 A	PB/LI	12 / 24 / 48	379.00
VICTRON <b>SMARTSOLAR 100/50</b>	D	Y	700 W (12 V) / 1400 W (24 V)	18 V (12 V) / 32 V (24 V)	100 V	50 A	PB/LI	12 / 24	379.00
VICTRON <b>SMART BATTERY SENSE</b>	Bluetooth battery sensor, wireless connection to SmartSolar controllers for temperature and voltage drop compensation								47.00

Legend: U= Step up; D= Step down; U/D= Combined step up & step down

\* Lithium batteries must have an integrated Battery Management System (BMS)

\*\* With optional bluetooth accessory: add € 47

\*\*\* The Genasun GV-BOOST controllers are available in waterproof version: add € 40

# Accessories

	Description	Price € (excluding VAT)
<b>Adhesive</b>	Pre-mounted adhesive backing for permanent and walkable installations	30.85
<b>Steel eyelets</b>	Eyelets realized on the edges of the panel	20.85
<b>LOXX fastener</b>	Stainless steel strap buttons that allow easy installation and removal of the panel (each)	8.15
<b>Zipper</b>	Zipper sewn on the edge of the panel	93.35
<b>Stiffening</b>	Mechanical stiffening via fiberglass bars	47.00
<b>MC4 connectors</b>	Waterproof solar connectors to realize the electrical connection to the junction box (a pair)	8.15
<b>Y connectors</b>	MC4 adapter for parallel connection of two panels (additional MC4 blocking diodes might be needed)	10.45
<b>Diode connector</b>	Blocking diode for safe parallel connection of panels (each)	8.15
<b>Deck seal</b>	Deck feedthrough featuring two MC4 connectors on a stainless steel plate	47.00
<b>Cables</b>	Double-insulated tinned and UV-resistant 4mm² wire (€/meter)	2.00
<b>Circuit breaker</b>	Resettable circuit protection, available in different sizes (20/40/50A)	20.75
<b>Printed 1:1 template</b>	Printed 1:1 template of custom solar panel to check proper fit (price per panel, EU shipping included)	20.00